

## Black Paris & A Taste of France

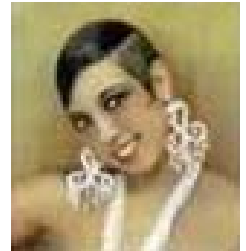
### 10 Day Cultural Tour of France - Paris, Burgundy, and Dordogne

Discover Paris, Experience Burgundy  
and Explore Josephine Baker's Chateau

June 18– 28, 2010



Join us in celebrating the best of Black Paris, traditional France, plus get a glimpse into the life of the legendary Josephine Baker. We start in Paris with a guided walking and bus tour that retraces the illustrious lives and achievements of Black Americans who chose to live in Paris between 1784-1960. Our tours will be provided by "Walking the Spirit Tours of Black Paris" and they focus on popular areas – The Latin Quarter/St. Germain-des-Pres, Champs-Elysees and Lower Montmartre. Tour 1 (Voices and Visions in Exile) walks through neighborhoods of writers Richard Wright, James Baldwin, Chester Himes, artists Henry O.Tanner, Lois Mailou Jones and Beboppers Miles Davis and Bud Powell. On Tour 2 (The Entertainers) we



relive the excitement of Black Montmartre of the 1920s and 1930s where jazz flourished alongside African art, decadence, and black entrepreneurs. You will leave Paris with enough French history to give you a well-rounded picture of the times and circumstances. In an air-conditioned private motorcoach we then travel south to the Burgundy region to discover the world-famous vineyards and their panoramas, visit a winery, tour the wine cellars, enjoy tastings and explore the old village. And for the *piece de resistance* we continue further south to discover Josephine Baker's Dordogne. Here, we are guided through an exclusive tour of her former home, Chateau des Milandes, which is now an awe-inspiring tribute and exhibit to her life.



#### Your package includes:

- Nonstop roundtrip air on Air France from Wash. DC Dulles (IAD) to Paris (other cities can be arranged)
- 5 nights Hotel Le Senat – 3 star - Latin Quarter Hotel <http://www.hotelsenat.com/>
- American breakfast daily
- 2 nights Best Western Beaune (Burgundy wine region)
- 2 nights Best Western Le Renoir (Dordogne)
- Comprehensive 5-hour walking/bus tour through Black Paris
- Paris City Tour, Eiffel Tower and River Seine – 5 hours
- Burgundy wine tour including a tasting
- Tour of Josephine Baker's Chateau des Milandes
- All transfers, taxes, fees and service charges

**Rate per person:** \$2895.00 based on double occupancy. **Deposit due \$300 per person:** August 30. Optional Insurance: \$175.00 (approx.). **\$1,500 must be on account by January 15, 2010. Balance due:** April 15, 2010. NOTE: Airport taxes are subject to change without notice until the time of ticketing. Additional collection may be required, if applicable. Make checks payable to Colesville Travel. MasterCard, Visa accepted (add 3%). Returned checks subject to \$25 fee. Deposits are nonrefundable and nontransferable. Suggested payment plans \$350 15<sup>th</sup> of each month. Not included: tips for driver and tour guides. Items of a personal nature.

#### All Travel Arrangements Made By Colesville Travel

Cynthia Amin Hall  
P.O. Box 4844  
Silver Spring, MD 20914  
Office: 301-989-1654  
Fax: 301-989-8473  
Email: [cindy@colesvilletravel.com](mailto:cindy@colesvilletravel.com).  
Website: [www.colesvilletravel.com](http://www.colesvilletravel.com)

**Colesville Travel Registration/Credit Card Payment Form  
Black Paris & A Taste of France**

**Fax/mail/scan payment to Colesville Travel**

Passenger Name:

Passenger Name:

Passenger Name:

Passenger Name:

Tour: Black Paris and A Taste of France – June 18 – 28, 2010

Email:

Persons per room:

Insurance:  No  Yes, if yes, please provide date of birth:

City of Departure:

Deposit:  (add 3% for credit cards)

Cardholder (print name):

Home Phone:

Address:

City:  State  Zip

Card #:

Security Code#:  [Click here for information on your security code.](#)

Type of Card/Payment:  Visa  Mastercard  Check enclosed

Expiration Date:

\_\_\_\_ I understand that it is my responsibility to obtain the correct travel documentation (passport, visa, identification) for the destination(s) to be visited.

\_\_\_\_ I understand that the names printed on this invoice must match exactly the first and last names in each passport. Any discrepancy may result in cancellation, change fees, new and higher airfares or denial of services.

\_\_\_\_ My payment and signature below constitute acceptance of those terms. I have been offered insurance.

Cardholder's Signature:

Name (printed):  Date:

Fax to Colesville Travel at 301-989-8473  
or mail to: Colesville Travel, P.O. Box. 4844, Silver Spring, MD 20914  
Phone: 301.989.1654 Email: [cindy@colesvilletravel.com](mailto:cindy@colesvilletravel.com) - Website: [www.colesvilletravel.com](http://www.colesvilletravel.com)  
Thank You.